

Let's dive into the details!

The time it takes for architectural plans to reach the design stage can vary depending on a variety of factors. However, on average, the duration can range from a few weeks to several months. The timeline primarily depends on the complexity and scale of the project, the level of detail required, and the collaboration between the architect and the client.



Go >

Architect drawings provide clear and detailed information about the **design**, enabling commencement of design and conversion of regs drawings into working SIPs/Timber Frame designs.



Design Ready



Get Ready to Go >

Architectural drawings may have **missing dimensions or unclear setting out information**, meaning design cannot be fully commenced or accurate setting out obtained from the current drawings package.

= 1–4 weeks

before design can commence



Do Not Proceed >

Do not proceed architect drawings aren't suffice to commence in **design**, this is usually when only planning drawings are in hand and the building regs package is yet to be developed.

= 4–8 weeks

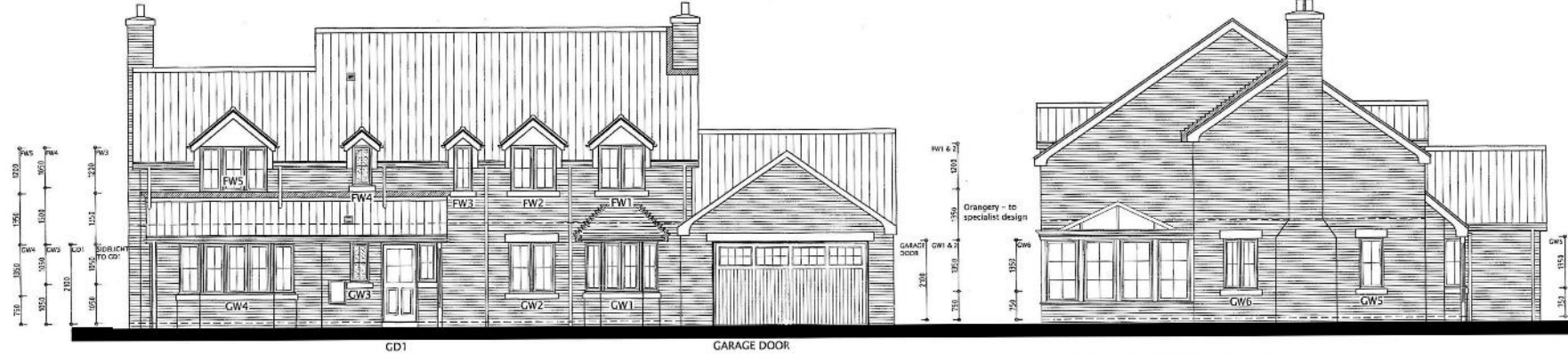
before design can commence

What should be included in a complete set of architectural plans?

Go Elevations

Elevations show the exterior facades of the building from **all sides**. They illustrate what the front, back, and side views of the building will look like, **and include** materials, finishes, windows, doors, and decorative elements.

ELEVATIONS



FRONT ELEVATION

SIDE ELEVATION



REAR ELEVATION

SIDE ELEVATION

[Back to Intro](#)

[Comparison Plans](#)

1

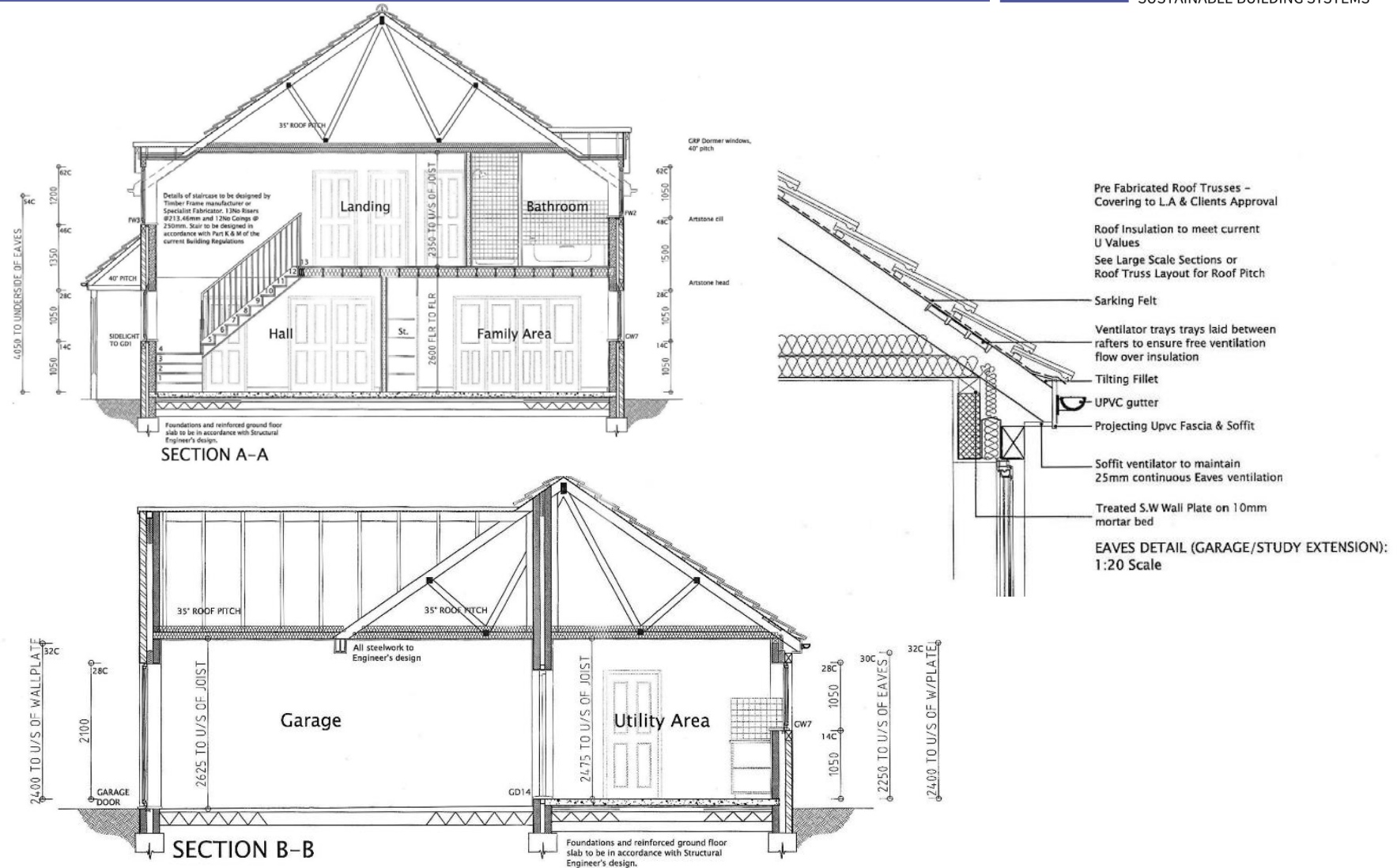
2

3

What should be included in a complete set of architectural plans?

Go Sections

Sections are cutaway views that reveal what's inside the walls. Vertical sections display the through wall build ups accurately as well as floors and roofs, whilst accurately demonstrating setting out requirements of each element.



[Back to Intro](#)

[Comparison Plans](#)

1

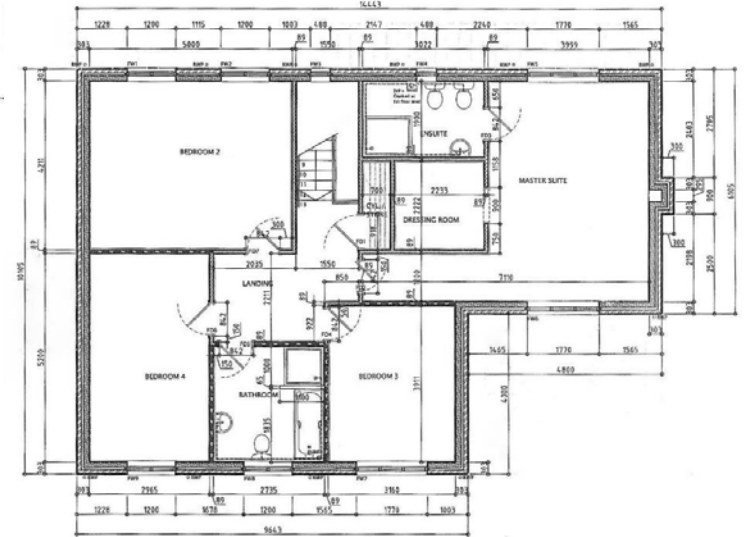
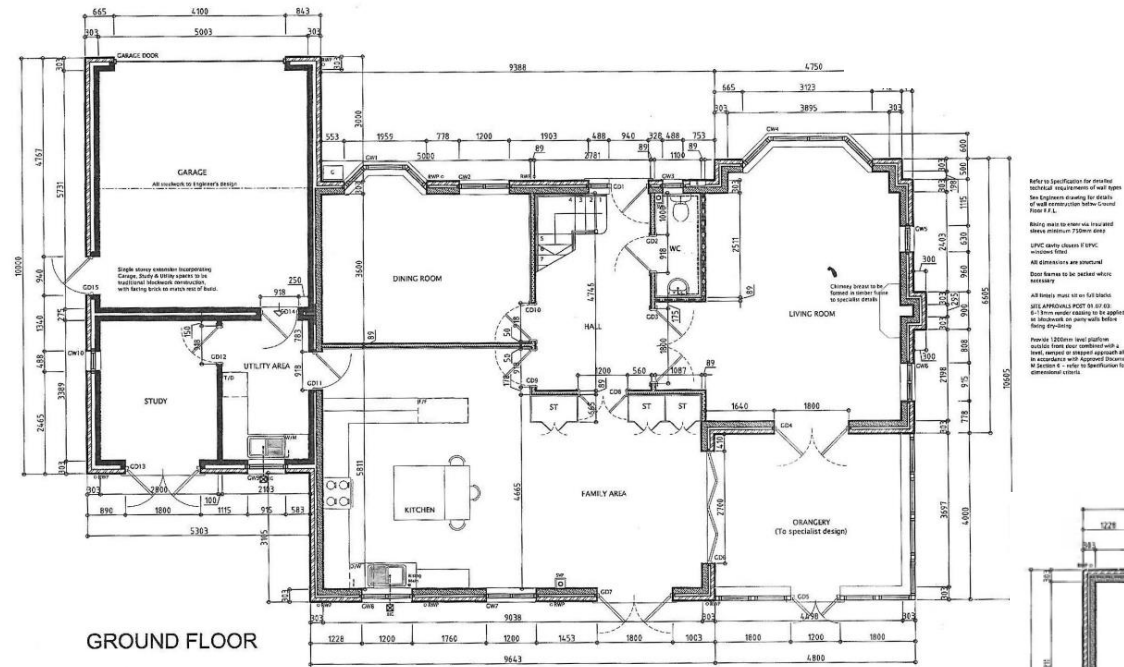
2

3

What should be included in a complete set of architectural plans?

Go Plans

Setting out plans that show detailed layout and dimensions of a building's floor level. These plans outline the placement of walls, doors, windows, and other structural elements. They provide crucial information for contractors and builders, ensuring accurate construction and adherence to design requirements.





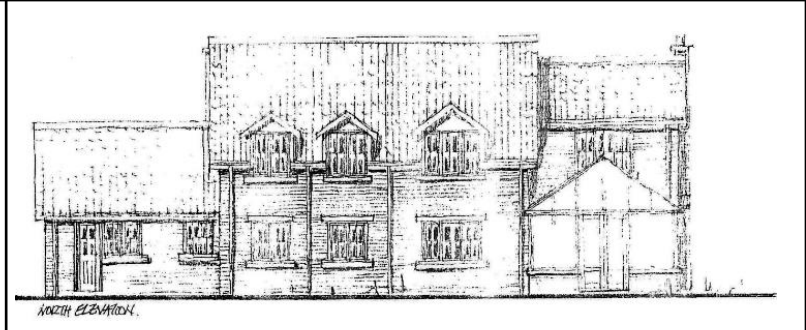
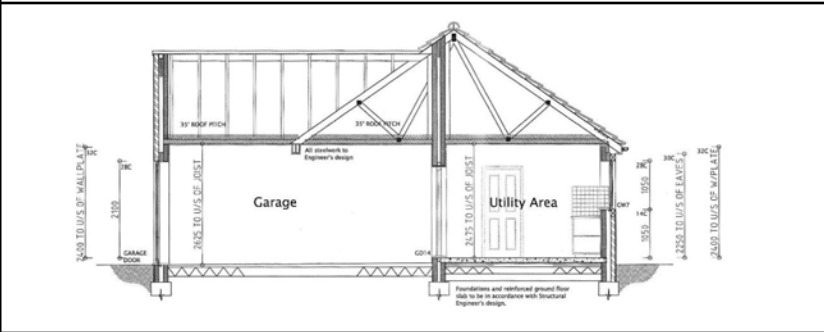
[Back to Intro](#)

[Comparison Plans](#)

1

2

3

	Go >	Get Ready to Go >	Do Not Proceed >
Elevations			
Sections		Design cannot fully commence, details required or accurate setting out cannot be obtained from the current drawings package.	Design cannot fully commence: Planning stage drawings are in hand and the building regs package is yet to be developed.
Plans	